



PRODUCT GUIDE



THE ULTIMATE AMMUNITION

OVERVIEW

COMMITTED TO MEETING AND EXCEEDING THE EXPECTATIONS
OF SHOOTERS WORLDWIDE, GAMEBORE® GIVES CLAY
SHOOTERS THE COMPETITIVE ADVANTAGE.

GAMEBORE® OFFERS CATEGORY LEADING CARTRIDGES FOR
EACH SEGMENT OF THE SPORT, SATISFYING EVERY
PREFERENCE OPTION SUCH AS DISCIPLINE, PERFORMANCE,
COMFORT, PRICE RANGE, AND ENVIRONMENT.

SERIOUS ABOUT SHOOTING

THE PINNACLE IN COMPETITION LOADS, DARK STORM® ONYX
IS GAMEBORE'S ULTRA-HIGH PERFORMANCE CLAY
CARTRIDGE. BUILT FOR THE MOST DEMANDING OF SPORTING
AND FITASC TARGETS

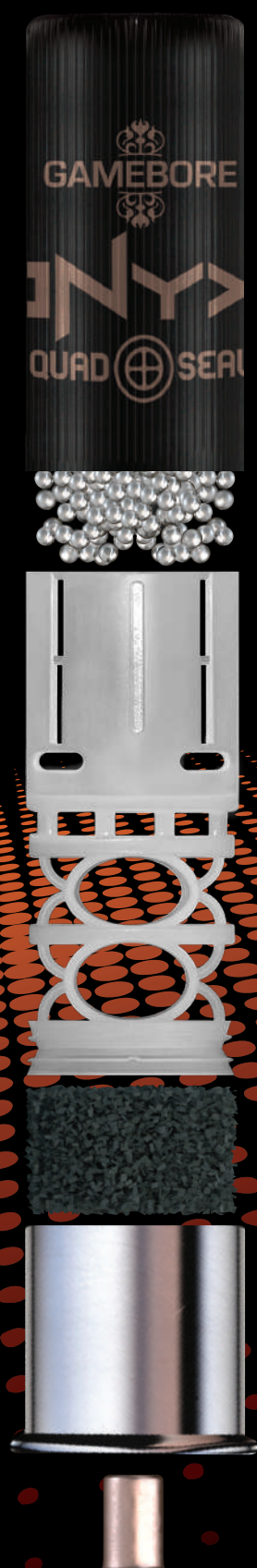


THE MOST TRUSTED AMMUNITION IN THE SPORT

WITH A REPUTATION FOR BEING THE BEST, GAMEBORE® CARTRIDGES ARE KNOWN FOR THEIR UNDISPUTED QUALITY AND PERFORMANCE. THAT'S WHY THE WORLD'S MOST PROMINENT PRO SHOOTERS, CLUBS AND ORGANISATIONS OPT TO ASSOCIATE THEIR NAME AND BRAND WITH GAMEBORE®, THE MOST TRUSTED NAME IN AMMUNITION, AND THE MOST DECORATED IN THE WORLD OF SPORTING AND FITASC, CHOSEN BY PROFESSIONALS WORLDWIDE



DARK STORM® ONYX



THE PRO CARTRIDGE RANGE



12G DARK STORM® ONYX

THE ULTIMATE PERFORMANCE COMPETITION LOAD

OVERVIEW

Onyx delivers devastating performance and superb patterns at the longest of ranges.

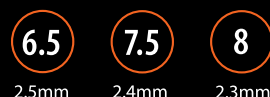
With our HDP Wad System, injection moulded with High Density Polyethylene for use in ultra high performance loads, and built-in Quad Seal® technology improving the seal generated by a standard plastic wad, for ultimate consistency whilst reducing the felt recoil.

Diamond Shot® Xtra is produced and finished in-house for total quality control. A harder pellet, graded even further for perfection in size and sphericity.

Dark Storm® Onyx is an ultra-high performance clay cartridge with a muzzle velocity of 1600 feet per second. Our custom RS propellant gives the best velocity possible. Its nickel plated head gives smooth, consistent and reliable ejection.



Continental sized Diamond Shot® Xtra



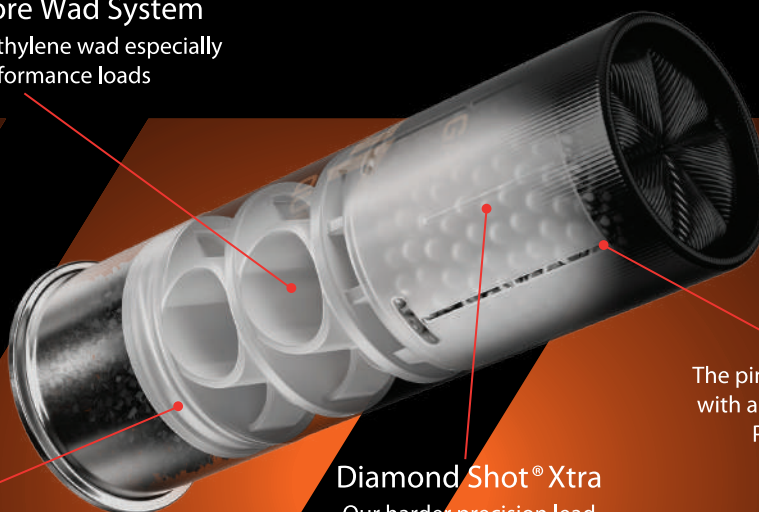
TECHNICAL DATA

CARTRIDGE	LOAD gms	SHOT SIZE	WAD	LENGTH mm	VELOCITY
12g Dark Storm® Onyx	28	7.5, 8	Fibre QS	20/70	1600
12g Dark Storm® Onyx	28	6.5, 7.5, 8	Plastic QS	20/70	1600

TECHNOLOGY OVERVIEW

HDP Gamebore Wad System

High Density Polyethylene wad especially for ultra performance loads



Quad Seal®
Exclusive 4 Ring Gas Seal

4

Diamond Shot® Xtra
Our harder precision lead shot, graded 7 times

x7

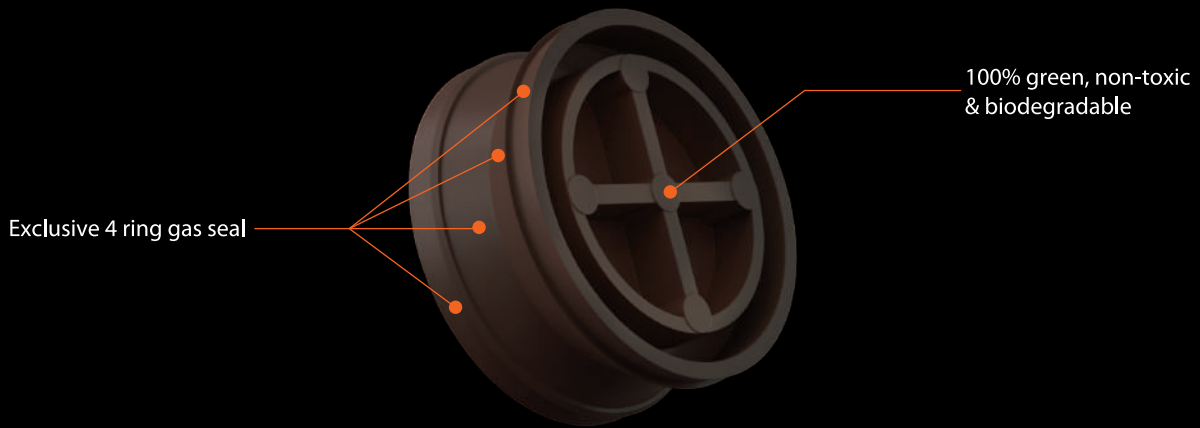
Velocity

The pinnacle in performance with a velocity of 1600 Feet Per Second (FPS)

1600fps

FIBRE QUAD SEAL®

The exclusive Quad Seal® delivers a level of ballistic consistency not previously achievable in a fibre wad cartridge thanks to its revolutionary four-ring design. It reduces recoil, increases striking energy and is 100% environmentally safe and fully biodegradable. Designed and developed to elevate the performance of a fibre wad cartridge for use in competition at venues where plastic wads are prohibited.



Approved for use at shooting grounds that require an environmentally safe wad, Quad Seal® will fully biodegrade outdoors, far sooner than the over-powder card obturator typically found in most modern-day fibre wadded cartridges.



12G BLACK GOLD DARK STORM®

THE ULTRA HIGH PERFORMANCE COMPETITION LOAD



OVERVIEW

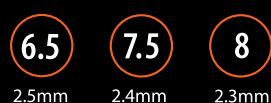
Designed and developed for extreme Sporting and FITASC targets, with the serious competitive shooter in mind, Black Gold Dark Storm® delivers devastating performance and patterns at the longest of ranges.

Our custom RS Propellant gives the highest of performance with minimal recoil, whilst Gamebore's exclusive Diamond Shot® with its consistent sizing, quality and sphericity creates perfect pattern.

Featuring a nickel plated head for smooth, consistent and reliable ejection. Available with the plastic Gamebore® Wad System, or fibre wad with Quad Seal®.



Continental sized Diamond Shot®



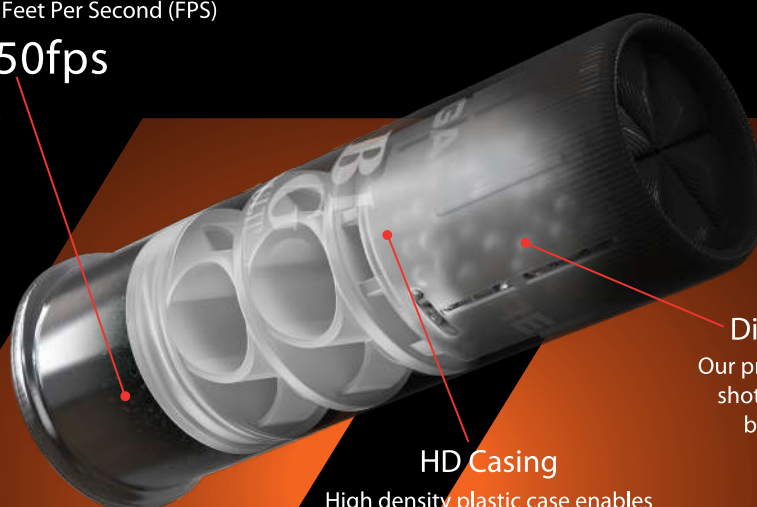
TECHNICAL DATA					
CARTRIDGE	LOAD gms	SHOT SIZE	WAD	LENGTH mm	VELOCITY
12g Dark Storm®	28	7.5, 8	Fibre QS	20/70	1550
12g Dark Storm®	28	6.5, 7.5, 8	Plastic QS	20/70	1550

TECHNOLOGY OVERVIEW

Velocity

Ultra high performance with a muzzle velocity of 1550 Feet Per Second (FPS)

1550fps



HD Casing

High density plastic case enables maximum performance

Diamond Shot®

Our precision made, coated shot, graded 5 times for ballistic perfection

5x

12G WHITE GOLD®

THE PROFESSIONAL LEVEL COMPETITION LOAD

OVERVIEW

Developed with the world's most decorated shot George Digweed MBE for professional level performance.

Loaded with our exclusive Diamond Shot®, the prestigious White Gold® brand is internationally renowned for its quality and consistency.

With a velocity of up to 1450 feet per second, and featuring a nickel plated head for smooth and consistent ejection, the White Gold® range is the result of years of extensive research and development.

Available with the plastic Gamebore® Wad System or fibre wad with the 100% environmentally friendly Quad Seal®.



Continental sized Diamond Shot®

7.5

2.4mm

8

2.3mm

George Digweed



TECHNICAL DATA

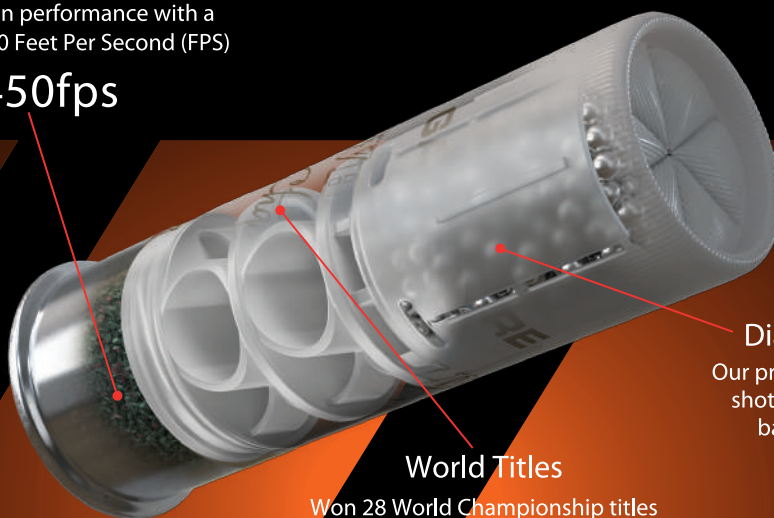
CARTRIDGE	LOAD gms	SHOT SIZE	WAD	LENGTH mm	VELOCITY
12g White Gold®	28	7.5, 8	Fibre QS	16/70	1450
12g White Gold®	28	7.5, 8	Plastic QS	16/70	1450

TECHNOLOGY OVERVIEW

Velocity

The pinnacle in performance with a velocity of 1450 Feet Per Second (FPS)

1450fps



Diamond Shot®

Our precision made, coated shot, graded 5 times for ballistic perfection

5x

World Titles

Won 28 World Championship titles (by George Digweed MBE)

28x

12G ROSE GOLD PRO COMP

THE SMOOTHER PROFESSIONAL LEVEL COMPETITION LOAD

OVERVIEW

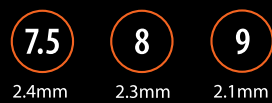
A professional level competition load with extra smooth recoil, carefully crafted to give the ultimate in consistency and performance.

Featuring Gamebore's exclusive Diamond Shot[®], graded 5 times then polished in a revolutionary method to produce pellets perfect in their consistency, sphericity and size, delivering the very best pattern.

Delicate on the shoulder without compromising on energy at range, Rose Gold Pro Comp allows you to compete at the highest level without fatigue or discomfort.



Continental sized Diamond Shot[®]



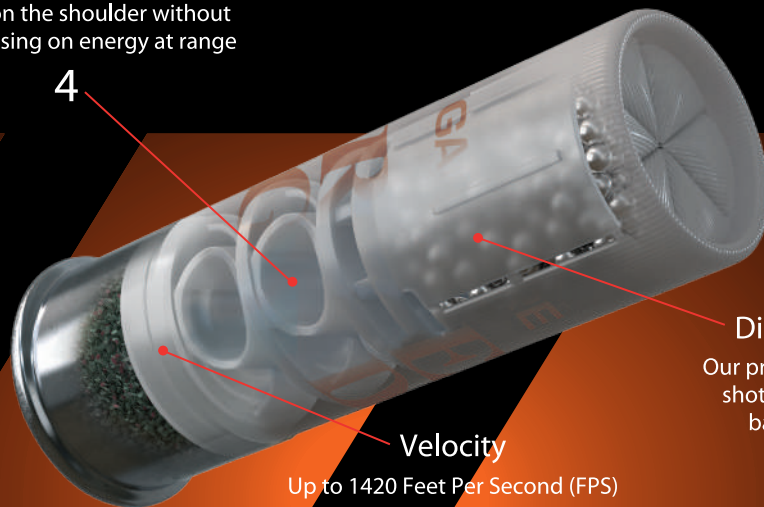
TECHNICAL DATA					
CARTRIDGE	LOAD gms	SHOT SIZE	WAD	LENGTH mm	VELOCITY
12g Rose Gold Pro Comp	24	7.5, 8	Fibre	16/70	1400
12g Rose Gold Pro Comp	24	7.5, 8, 9	Plastic	16/70	1400
12g Rose Gold Pro Comp	28	7.5, 8	Fibre	16/70	1420
12g Rose Gold Pro Comp	28	7.5, 8, 9	Plastic	16/70	1420

TECHNOLOGY OVERVIEW

Low Recoil

Delicate on the shoulder without compromising on energy at range

4



Diamond Shot[®]

Our precision made, coated shot, graded 5 times for ballistic perfection

5x

Velocity

Up to 1420 Feet Per Second (FPS)

1420fps

THE COMPETITION CARTRIDGE RANGE

12G DTL ELITE

A COMPETITION LOAD FOR DTL & TRAP DISCIPLINES

OVERVIEW

DTL Elite is a carefully crafted load designed to give the ultimate in consistency, performance, comfort and pattern for these demanding disciplines.

Loaded with our exclusive Diamond Shot[®], graded 5 times then polished in a revolutionary method to produce pellets perfect in their consistency, sphericity and size.

The CX2000 Primer ensures they perform reliably every time, affording you complete confidence in their performance during training, competition or club shooting.



Continental sized Diamond Shot[®]



TECHNICAL DATA

CARTRIDGE	LOAD gms	SHOT SIZE	WAD	LENGTH mm	VELOCITY
12g DTL Elite	28	7.5, 8	Plastic	16/70	1425

12G EVO R

A COMPETITION LEVEL CLAY TARGET LOAD

OVERVIEW

NEW Evo R is a performance load suitable for use at competition level while still being affordable for club shooting. With loads of 24 and 28gms Evo R covers every aspect of the sport.

Developed alongside our elite level shots to deliver a cartridge that caters for the needs of competitive shooters.

Built to be affordable without sacrificing on quality, Evo R delivers the reliable performance you can expect from any Gamebore® cartridge.

Loaded with Gamebore's precision lead shot, made and used exclusively by Gamebore®. Produced using pure British ingots and precision manufactured in the last remaining shot tower in the UK to ensure accurate, even size and perfectly spherical pellets - crucial for delivering consistent patterns.

Also available in a subsonic, low noise version in 28gms, shot size 8 with fibre wad.



English sized Lead Shot

7.5

2.4mm

8

2.3mm

9

2.1mm



TECHNICAL DATA

CARTRIDGE	LOAD gms	SHOT SIZE	WAD	LENGTH mm	VELOCITY
12g Evo R	24	8	Fibre	8/65	1420
12g Evo R	24	7.5, 8, 9	Plastic	10/70	1420
12g Evo R	28	7.5, 8	Fibre	10/70	1420
12g Evo R	28	7.5, 8, 9	Plastic	10/70	1420
12g Evo R Low Noise	28	8	Fibre	8/65	SUBSONIC

12G VELOCITY BLACK

CLUB AND COMPETITION LOAD

OVERVIEW

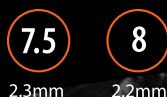
At Gamebore®, we believe that entry level cartridges should be designed and manufactured without ever sacrificing quality or performance. New Velocity Black takes our entry level clay shotgun cartridge to another level with high quality components and our precision made lead shot. This is a budget cartridge which punches way above its weight to deliver patterns and performance far exceeding others in its price range.

Choose from our Gamebore® plastic wads, manufactured in-house to our exacting designs and standards, or our high quality non-fragmenting 100% fibre wads. Both wads deliver excellent gas seals for outstanding patterns.

Velocity Black is a moderate recoil cartridge, ensuring a more comfortable experience that's easier on the shoulder and results in less fatigue during long sessions.

Loaded with Gamebore's 100% British precision engineered lead shot, forged from pure British lead ingots in the only remaining working shot tower in the UK, our lead shot is manufactured to ensure an accurate, even size and a perfectly spherical shot.

English sized Lead Shot



TECHNICAL DATA

CARTRIDGE	LOAD gms	SHOT SIZE	WAD	LENGTH mm	VELOCITY
12g Velocity Black	21	7.5	Fibre	8/65	1395
12g Velocity Black	21	7.5	Plastic	8/65	1395
12g Velocity Black Rapid	26	7.5	Fibre	8/70	1500
12g Velocity Black Rapid	26	7.5	Plastic	8/70	1500
12g Velocity Black	28	7.5, 8	Fibre	8/70	1410
12g Velocity Black	28	7.5, 8	Plastic	8/70	1410

STEEL COMPETITION LOADS

12G BLACK GOLD® HV STEEL

PROFESSIONAL NON-TOXIC COMPETITION

OVERVIEW

Black Gold® HV Steel offers a high performance, non-toxic alternative to lead loads. With a muzzle velocity of 1450FPS and performance at range, this cartridge has won numerous competitions where lead shot is prohibited.

A true performance green load. UK SPEC*** CIP

English sized Lead Shot

7.5
2.5mm



TECHNICAL DATA

CARTRIDGE	LOAD gms	SHOT SIZE	WAD	LENGTH mm	VELOCITY
12g Black Gold® HV Steel	24	7.5	Plastic	20/70	1450
12g Black Gold® HV Steel	28	7.5	Plastic	20/70	1450

12G WHITE GOLD® PRO-STEEL

NON-TOXIC PERFORMANCE COMPETITION

OVERVIEW

White Gold® Pro-Steel has a muzzle velocity of 1400 feet per second, and provides the shooter with a high quality competition load for grounds where the use of lead shot is prohibited.

UK SPEC*** CIP.

7.5 **9**
2.5mm 2.25mm



TECHNICAL DATA

CARTRIDGE	LOAD gms	SHOT SIZE	WAD	LENGTH mm	VELOCITY
12g White Gold® Pro Steel	24	7.5, 9	Plastic	16/70	1400
12g White Gold® Pro Steel	28	9	Plastic	16/70	1400

12G VELOCITY STEEL TARGET

NON-TOXIC CLUB AND TRAINING

OVERVIEW

The NEW Velocity Steel Target range is designed for training and competition at venues where lead shot is not accepted. With over 40 years of experience of developing steel loads, our know-how and expertise has earned us the position of Europe's number one manufacturer of non-toxic shotgun cartridges.

Featuring Gamebore® Precision Steel shot, reliably consistent in its sphericity and size for outstanding patterns. Velocity Steel has a velocity of 1350 feet per second and is low in recoil. UK SPEC CIP.



7.5
2.5mm

9
2.25mm



TECHNICAL DATA

CARTRIDGE	LOAD gms	SHOT SIZE	WAD	LENGTH mm	VELOCITY
12g Velocity Steel	21	7.5	Plastic	8/65	1350
12g Velocity Steel	24	7.5, 9	Plastic	8/70	1350
12g Velocity Steel	28	7.5, 9	Plastic	8/70	1350

SMALL GAUGE CLAY CARTRIDGES

20G WHITE GOLD®

OVERVIEW

Expanding Gamebore's long established and award winning White Gold® range, the NEW 20g White Gold® load delivers the professional level competition performance of its 12g counterpart, for shooters that prefer a smaller gauge shotgun.

With the same quality components, such as Gamebore's exclusive Diamond Shot® and our specially blended Vectan® Powders, shooters can expect a level of performance worthy of the world's toughest competition arenas.

Continental sized Diamond Shot®

7.5

2.4mm

8

2.3mm



CX2000 PRIMER

VECTAN

GAMEBORE WAD SYSTEM

DIAMOND SHOT

HDO

LOW RECOIL

TECHNICAL DATA					
CARTRIDGE	LOAD gms	SHOT SIZE	WAD	LENGTH mm	VELOCITY
20g White Gold®	24	7.5, 8	Plastic	16/70	1450
20g White Gold®	28	7.5, 8	Plastic	16/70	1450



20G SUPER COMPETITION

OVERVIEW

Gamebore® Super Competition loads are designed to be light on the shoulder.

The range includes loads suitable for beginners, or those that suffer with recoil, through to pro-level competition cartridges. Available with both a plastic or a fibre wad.

English sized Lead Shot

7.5

2.4mm

8

2.3mm

9

2.1mm



TECHNICAL DATA

CARTRIDGE	LOAD gms	SHOT SIZE	WAD	LENGTH mm	VELOCITY
20g Super Competition	21	7.5	Fibre	8/65	1300
20g Super Competition	24	8	Fibre	8/65	1350
20g Super Competition	24	7.5, 8, 9	Plastic	8/70	1350
20g Super Competition	28	8	Fibre	8/65	1350
20g Super Competition	28	8	Plastic	8/70	1375
20g Super Competition Low Noise	24	8	Fibre	8/65	SUBSONIC

.410 & 28G TARGET

OVERVIEW

A smooth shooting load delivering outstanding patterns in small calibre.



English sized Lead Shot

9

2.1mm



TECHNICAL DATA

CARTRIDGE	LOAD gms	SHOT SIZE	WAD	LENGTH mm	VELOCITY
.410 Target	14	9	Plastic	8/65	1400
28g Target	21	9	Plastic	8/70	1400

TECHNOLOGY

Gamebore® cartridges amalgamate a number of superior and cutting edge components to produce an end product which is world class. Each type of cartridge utilises a different combination of elements to make it specific for its use and requirements.



QUAD SEAL®

Our patented Quad Seal® gives ballistic consistency not previously achievable, with its revolutionary four-ring design. It reduces recoil, increases striking energy and it is 100% environmentally friendly.



FIBRE WAD

The highest quality, single piece, non fragmenting 100% fibre wads with no plastic components to deliver excellent gas seals and patterns.



GAMEBORE® WAD SYSTEM

Plastic wads manufactured in house to unique designs and exacting standards to give consistent performance and deliver perfect patterns every time. Using the very latest manufacturing equipment and best materials available.



HDP GAMEBORE® WAD SYSTEM

Gamebore's Wad System design injection moulded with High Density Polyethylene for use in ultra high performance loads, with Quad Seal® technology further improving the seal generated by the standard plastic wad.



CX2000 PRIMER

The most highly consistent and reliable primer available, this is used throughout our cartridges to give the shooter the utmost reliability and confidence.



HD CASE

High density polymer plastic case designed to perform in our premium, high performance range to give easy loading and smooth ejection from a case made specifically for these demanding loads.



NICKEL BRASS HEAD

Nickel plated to give smooth, consistent and reliable ejection in higher performance loads.



VECTAN® POWDER

Clean burning, reliable, consistently smooth powders from Nobel Sport FR, a world leader in powder production. Vectan® powder is the most premium powder produced by Nobel Sport FR.



RS PROPELLANT

Our custom blended, top of the range double base RS propellant gives the highest performance possible, whilst remaining comfortable for the shooter.



DIAMOND® LEAD SHOT

Produced here at Gamebore® and used exclusively by ourselves, it is lead shot taken to the next level with a unique process which sees it graded further and polished in a revolutionary process to produce shot of a consistency far beyond anything else available. Perfect in its sphericity and size to deliver the ultimate in patterns. Simply put, Diamond Shot® is the best quality lead shot in the world.



DIAMOND SHOT® XTRA

Advancing the Lead pellet yet another level, with added antimony and graded even further than our renowned Diamond Shot® in our on-site grading facility. Diamond Shot® Xtra is British lead, processed, perfected and refined here at Gamebore® to produce the optimum in aero-dynamics.



GAMEBORE® LEAD SHOT

Made and used exclusively by Gamebore®, this shot is precision manufactured in the last remaining shot tower in the UK to ensure accurate, even size and perfectly spherical shot which is crucial for delivering consistent patterns.



PRECISION STEEL

Soft steel shot to CIP regulations from one of the world's leading manufacturers for exacting standards. Reliably consistent in its sphericity and size for outstanding patterns.



D 7.9

Shot with a Density of 7.9 gram/cm³



HD 11

Shot with a High density of 11.0gram/cm³



ULTIMATE PERFORMANCE

Developed to ensure all components combine to give their maximum potential and deliver results which are greater than the sum of their parts - simply the cutting edge of performance cartridges.



HIGH VELOCITY

Cartridges with high velocity ideal for performance use and demanding disciplines where targets are at range.



EXTENDED RANGE

Muzzle velocity is only part of the story, downrange energy is key to a cartridges long range effectiveness. These cartridges are designed to deliver unsurpassed performance down range where it matters most giving knockdown performance others simply cannot match.



LOW RECOIL

An ideal cartridge when the shooter needs a cartridge with a soft recoil.



MODERATE RECOIL

The recoil is moderate and may be reduced further if a heavier gun or other recoil reducing measures are adopted.



ALL THE GEAR

FOR THE COMPLETE GAMEBORE SHOOTING AND LIFESTYLE RANGE, VISIT
[SHOP.GAMEBORE.COM](https://shop.gamebore.com)







Gamebore Cartridge Co Ltd., Great Union Street, Hull, HU9 1AR. England.
e.mail: info@gamebore.com

www.gamebore.com

